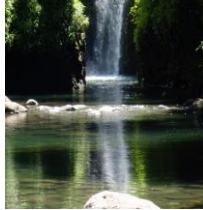


Fiji

Viti Levu Emission Reduction Programme

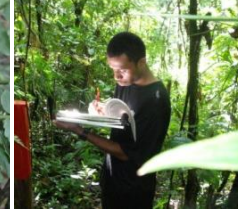
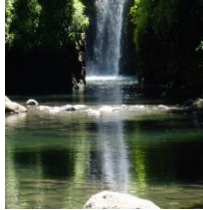
Fiji's Early Idea submission to the FCPF Carbon Fund
29 April 2015

Mr Eliko Senivasa
Deputy Conservator of Forests
Fiji



Presentation outline

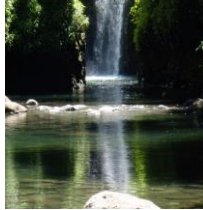
- Strategies to address drivers of deforestation and forest degradation
- Proposed ER projects and activities
- Benefit Distribution System
- Permanence
- Phased approach in Fiji
- Conclusion



- **Strategies to address drivers of deforestation and forest degradation**
- **Proposed ER projects and activities**
- **Benefit Distribution System**
- **Permanence**
- **Phased approach in Fiji**
- **Conclusion**

Driver/ Reference Activity	Strategy Options	Co-benefits
Agriculture	<ul style="list-style-type: none"> • Review policy and legislations that encourage sustainable agriculture development , sustainable management of forests • Carry out land use planning • Rehabilitate degraded grasslands (30 % of Fiji land mass) • Rehabilitate degraded forest areas (open forest area is increasing) • Promote agroforestry • Implement Fiji’s NBSAP and secure protected area network (HCVF) • Ecosystem valuation 	<ul style="list-style-type: none"> • Inter-sectoral planning and implementation strengthened • Active participation of local communities in decision making, planning and implementation • More income generating opportunities for farmers • Higher crop and income diversification leads to increased resilience against climate change impacts and natural disasters • Biodiversity conservation, protection of ecosystem services

Driver/ Reference Activity	Strategy Options	Co benefits
Unsustainable timber harvesting	<ul style="list-style-type: none"> • Enforce the national harvesting code of practice • Afforestation/Reforestation programmes to increase timber supply • Promote reduced impact logging • Improved Law Enforcement of SFM • Replant abandoned plantation sites • Promote community forestry initiatives 	<ul style="list-style-type: none"> • Increased community based enterprises (non-forest)
Coastal infrastructure development / mangrove removal	<ul style="list-style-type: none"> • Implement national mangrove management plan • Land use planning • Mangrove replanting 	<ul style="list-style-type: none"> • Conservation of coastal marine ecosystems for livelihoods and biodiversity • Increased resilience against impacts of climate change and natural disasters (large coastal community)



- **Strategies to address drivers of deforestation and forest degradation**
- **Proposed ER projects and activities**
- **Benefit Distribution System**
- **Permanence**
- **Phased approach in Fiji**
- **Conclusion**



FIJI
0 km 20 40 60 km
© 2009 Ezilon.com All Right Reserved

Great Sea Reef

NORTHERN DIVISION

Bligh Water

Vanua Levu

WESTERN DIVISION

KORO SEA

Northern Lau Group

EASTERN DIVISION

Viti Levu

CENTRAL DIVISION

Kadavu Passage

SOUTH PACIFIC OCEAN

Southern Lau Group

Roluma
Ahau

Cikobia

Ono-i-Lau

Vatua

Kadavu

Maluku

Ogea Levu

Vuaqava

Kabara

Fulaga

Totaya

Moala

Sawaleke

Gau

Nairai

Batiki

Wakaya

Makogai

Namacu

Koro

Taveuni

Gamea

Somasomo

Wailvevu

Savusavu

Nadurua

Labasa

Nubu

Naseva

Yadua

Yasawa

Nacula

Yaqeta

Navili

Waya

Lakeba

Tubou

Nayau

Tarakuqa

Cicia

Tuvuca

Vanua-Balavu

Mavana

Lomaloma

Mago

Nausori

Navua

Navua

Sigatoka

Nadi

Ba

Vatukoula

Rakiraki

Lautoka

Korovou

Nadrau

Plateau

Koroba

1005

1004

1004

1004

1004

1004

1004

1004

1004

1004

1004

1004

1004

1004

1004

1004

1004

1004

1004

1004

1004

1004

1004

1004

1004

1004

1004

1004

1004

1004

1004

1004

1004

1004

1004

1004

1004

1004

1004

1004

1004

1004

1004

1004

1004

1004

1004

1004

1004

1004

1004

1004

1004

1004

1004

1004

1004

1004

1004

1004

1004

1004

1004

1004

1004

1004

1004

1004

1004

1004

1004

1004

1004

1004

1004

1004

1004

1004

1004

1004

1004

1004

1004

1004

1004

1004

1004

1004

1004

1004

1004

1004

1004

1004

1004

1004

1004

1004

1004

1004

1004

1004

1004

1004

1004

1004

1004

1004

1004

1004

1004

1004

1004

1004

1004

1004

1004

1004

1004

1004

1004

1004

1004

1004

1004

1004

1004

1004

1004

1004

1004

1004

1004

1004

1004

1004

1004

1004

1004

1004

1004

1004

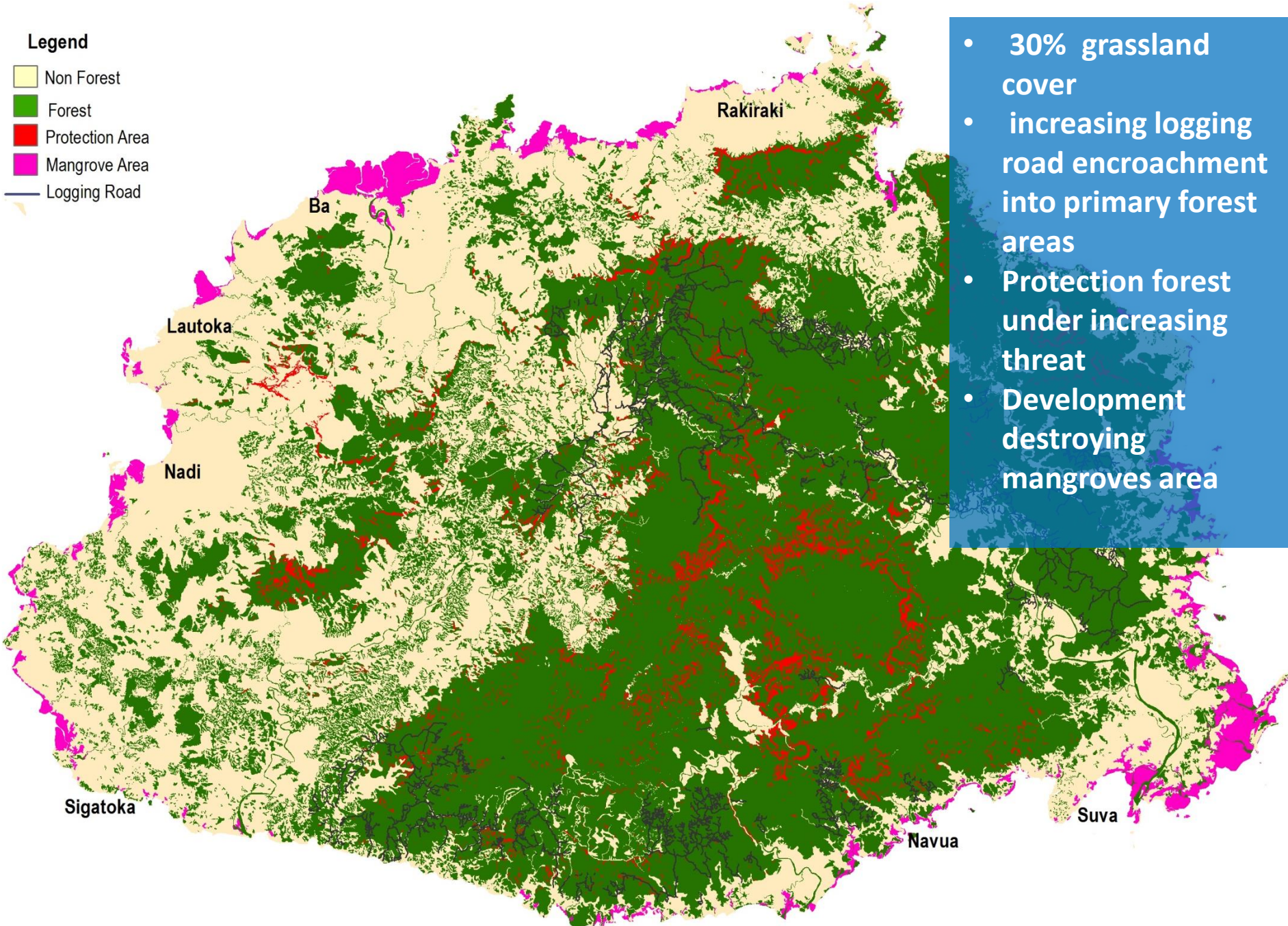
1004

1004

1004

Legend

- Non Forest
- Forest
- Protection Area
- Mangrove Area
- Logging Road

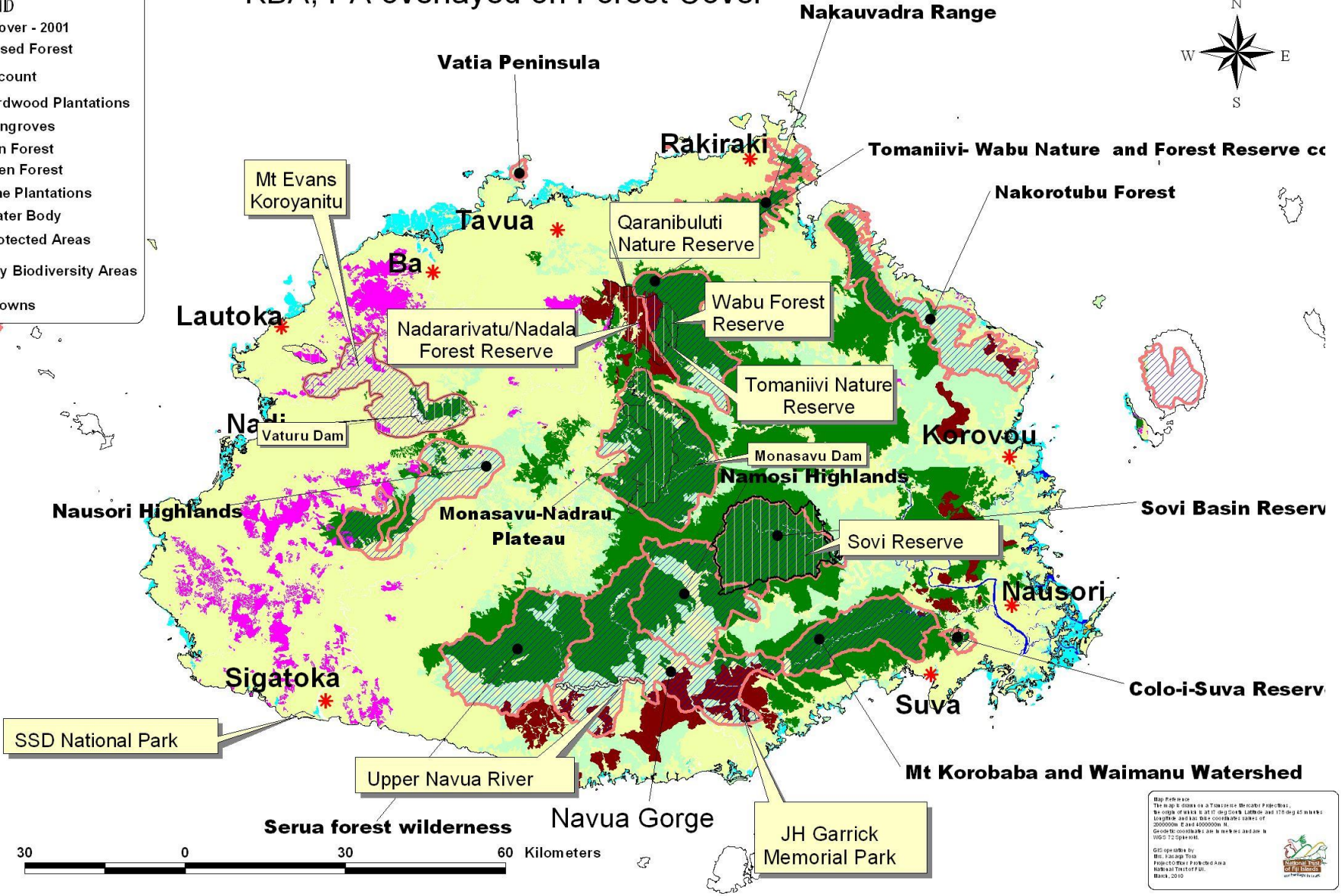


- 30% grassland cover
- increasing logging road encroachment into primary forest areas
- Protection forest under increasing threat
- Development destroying mangroves area

KBA, PA overlaid on Forest Cover

LEGEND
Forest Cover - 2001

- Closed Forest
- Coconut
- Hardwood Plantations
- Mangroves
- Non Forest
- Open Forest
- Pine Plantations
- Water Body
- Protected Areas
- Key Biodiversity Areas
- * Towns



Map Projection:
The map is based on a Transverse Mercator Projection. The origin of the map is at 177° 00' 00" East and 1° 00' 00" South. The map uses a datum of 20000000 E and 40000000 N. The map is oriented with North at the top. The map is based on the 1:50,000 scale map of Vanuatu.

GIS prepared by:
The National Geographic Institute
P.O. Box 1111
Suva, Vanuatu
2010

ER activities

Location	Area size (ha)	Baseline threat	Activities	ER potential (tCO ₂ e p.a.)	Developer
Viti Levu, (PFE program)	200,000 Logged over	Agriculture	Improved forest management (IFM)	Avoided deforestation : 260,000 Avoided degradation : 121,000	Department of Forests (DoF)
	300,000 Primary forests	Logging	Conservation IFM		
Emalu Primary forests	7,400 Primary forests	Logging	Conservation IFM	300,445	DoF / GIZ
Western Viti Levu	12,500 Agriculture margin	Agriculture	Reforestation	135,000	EU / SPC
Nakau-vadra	1,135 Grassland	Fire	Afforestation	34,000	CI
Nakavu	315	Logging	IFM	24,020	DoF / GIZ
TOTAL	521, 350			604, 465	

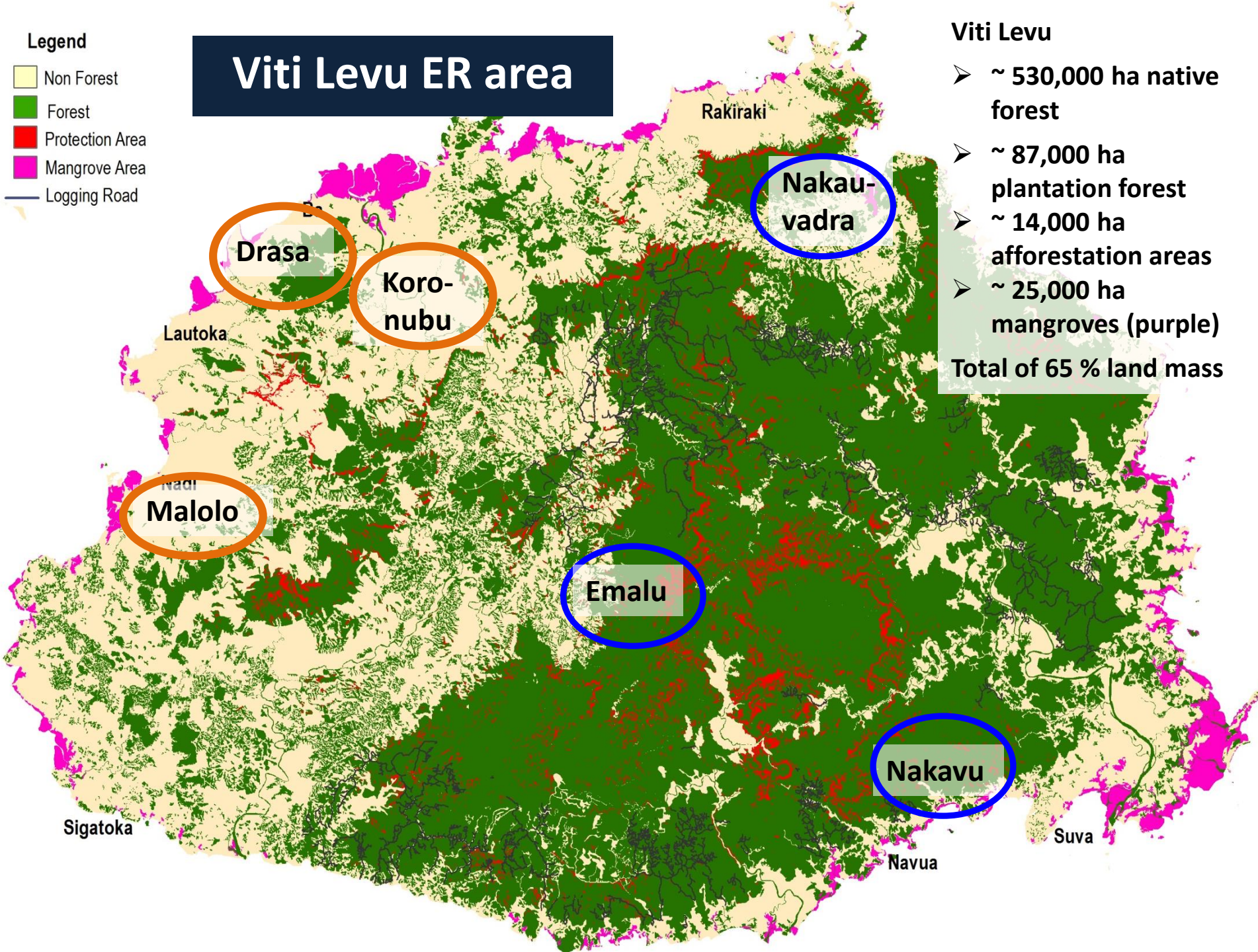
Legend

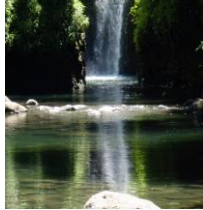
- Non Forest
- Forest
- Protection Area
- Mangrove Area
- Logging Road

Viti Levu ER area

Viti Levu

- ~ 530,000 ha native forest
 - ~ 87,000 ha plantation forest
 - ~ 14,000 ha afforestation areas
 - ~ 25,000 ha mangroves (purple)
- Total of 65 % land mass





- **Strategies to address drivers of deforestation and forest degradation**
- **Proposed ER projects and activities**
- **Benefit Distribution System**
- **Permanence**
- **Phased approach in Fiji**
- **Conclusion**

Ministry of Fisheries and Forests

Ministry of Foreign Affairs and International Cooperation

Other relevant Government agencies

Negotiate partnerships

Carbon credits held in Fiji Forest Carbon Facility (to be agreed – consultations ongoing)

Registry of carbon credits detailing carbon right holders (all clan members if Taukei clan holds carbon rights), REDD+ activity type,

REDD+ Unit monitors performance of REDD+ communities

Sites developed for carbon financing following principles of the Fiji REDD+ Policy and International requirements

Participatory assessments and surveys carried out by inter-disciplinary teams

Data fed into the National Forest Monitoring System to be monitored

Registry of carbon rights holders established with TLTB or Lands Dept. & database with REDD+ Unit

Registry updated when land leases or tenure change (based on existing procedures)

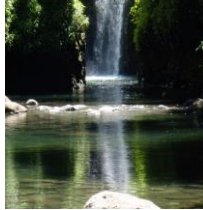
Landowners carbon property rights status confirmed by iTaukei registry for iTaukei Land; by TLTB for leased iTaukei Land, by Lands Department for state and freehold land

Eligible REDD+ sites confirmed and agreed by relevant stakeholders

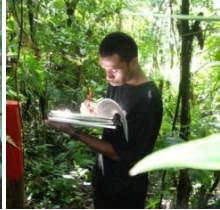
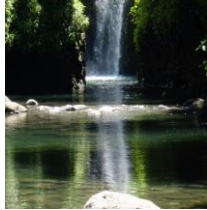
All government agencies (esp. drivers) are consulted and made aware

FPIC process followed

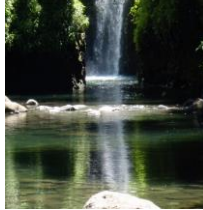
Agreed set of criteria applied



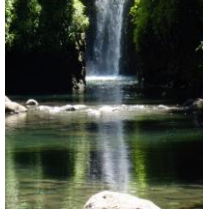
- **Strategies to address drivers of deforestation and forest degradation**
- **Benefit Distribution System**
- **Proposed ER projects and activities**
- **Permanence**
- **Phased approach in Fiji**
- **Conclusion**



- **Lease with landowners - lease agreement for REDD+ projects developed**
- **Supporting sectoral policies – land use planning with Department of Agriculture**
- **Improved land use data and monitoring - enhance forest planning**
- **Various projects have frameworks in place with local communities to ensure permanence**
- **Reserves will be established as security to buffer uncontrolled (force majeure, increased extreme weather etc.) carbon loss**
- **Provide incentives to increase involvement, participation and ownership of landowners (community-based enterprises)**



- **Strategies to address drivers of deforestation and forest degradation**
- **Benefit Distribution System**
- **Proposed ER projects and activities**
- **Permanence**
- **Phased approach in Fiji**
- **Conclusion**



National REDD+ Policy / Strategy/ Action Plan

Strategies to address the drivers of deforestation and forest degradation

Needs for capacity building

REDD+ Strategy Implementation & result-based demonstration activities

National forest MRV methodology developed & national reference level determined

Safeguard MRV methodology developed

Payment for Verified emission reductions & removals

Based on national MRV system

Safeguards monitored

2009

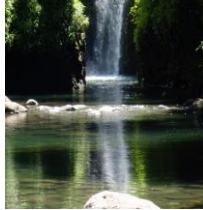
2015

2019

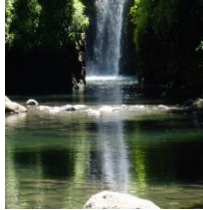
FCFP readiness funds

Readiness achieved;
Access carbon funds

Implementation of strategies already underway



- **Strategies to address drivers of deforestation and forest degradation**
- **Benefit Distribution System**
- **Proposed ER projects and activities**
- **Permanence**
- **Phased approach in Fiji**
- **Conclusion**



- **Small land mass, low ER potential**
- **HFLD (54%) - option to adjust forest reference level?**
- **Opportunity to rehabilitate degraded forest/grassland**
- **Diversity of learning value - small island perspective**
- **Carbon fund as incentives but with a no regret approach**
- **Huge opportunity for non carbon benefits**

Vinaka Vakalevu – Thank You

Website: <http://fiji-reddplus.org/>



Fiji National REDD+ Programme

National REDD+ Pilot site - Emalu

REDD+ is an effort to reduce carbon dioxide emissions and increase carbon sequestration in the forestry sector.

REDD+ stands for Reducing Emissions from Deforestation and forest Degradation, (+) conservation, sustainable management of forests and carbon stock enhancement.

The Fiji National REDD+ programme is also supporting other Land Use activities in enhancing livelihood options for the people in the area. This serves to also protect the Emalu forest.

Area and location

Area: 7,247 hectares
Mataqali: Emalu; Yavusa: Emalu
Village: Draubuta
District: Makofo; Province: Nadroga/Navosa

Managed by: the Forestry Department

Ministry of Fisheries and Forests, Takayawa Building, Torok Rd, Suva,
Phone: 3301611/Fax: 3318692



Photograph showing 'natural' or undisturbed forest landscape

Photograph showing 'old' or 'young' forest landscape

Importance of Emalu forest
Emalu forest has been identified as a biodiversity hotspot in Fiji. Biodiversity studies show that Emalu forest has a remarkably high rate of endemism.

Some of these include:

- 207 plant taxa
- 37 native bird species
- 26 families of terrestrial insects
- 76 freshwater microinvertebrates

Archaeological studies show that Emalu forest is rich in historical and cultural sites. A total of 77 historical and culturally significant sites were found.



giz
German Development Cooperation
for Sustainable Growth
and Employment (GIZ) GmbH

